

# *Comparisons*

---

## Mounts and Tripods

---



## Reflectors with the Most Unique to Common Mountings - Page 1

1) Most Unique (also elaborate with beautiful detailing) TRE14 Unsigned, c.1845.

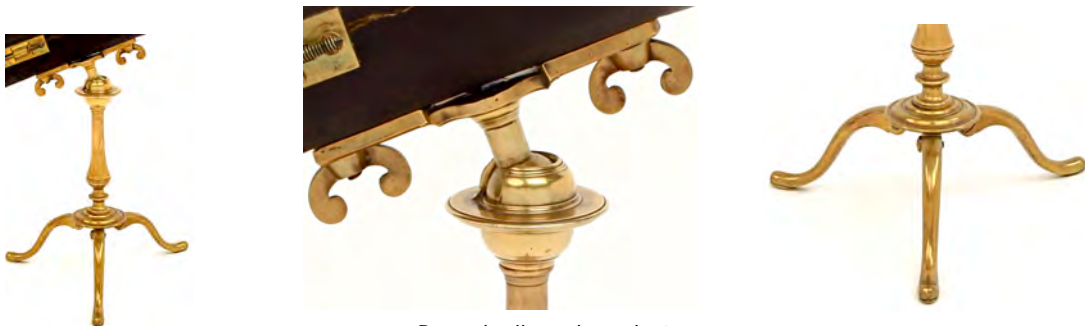


Brass Ball-and-Walnut Socket with cloth bushing



Tommy hole and field screw covers

2) Somewhat Unique TRE11 Passemant, c. 1750.



Brass ball-and-socket

## Reflectors with the Most Unique to Common Mountings - Page 2

3) Somewhat Unique HRE1 Unsigned petite salon and handheld gregorian, c. 1760.



Novel use of a field wood-screw to hold the tripod column to the shagreen-covered brass base

Compression band combined with a compass-type pivot field wood screw and salon

4) Common Compass Mounting TRE13 Potts, c. 1807-14 - standard, small gregorian



## Reflectors with Compass Mountings - Page 1



Bennett, c. 1740



Cole, c. 1747-58



Ramsden, c. 1770-90



D. Adams, c. 1788



Reflectors with Compass Mountings - Page 2



Watson, c. 1790



Dollond, c. 1810?



Adams, c. 1820?



## Reflectors with Slow-Motion Adjusters



Short, c. 1758



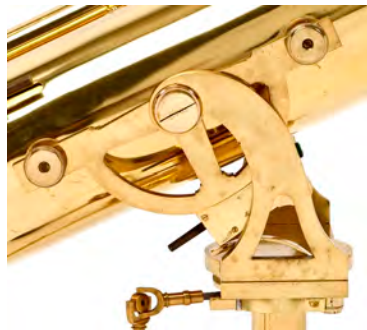
Nairne, c. 1760



D. Jones, c.1785



Troughton and Simms, c. 1835



## Newtonian Reflector Mountings - Page 1



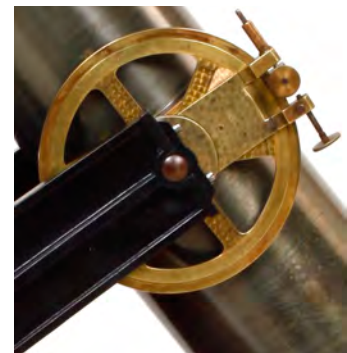
TRE16: SECRETAN



▲ Coarse 2°/notch <- Altitude adjusters -> Fine Thumb Screw ▲



FRE1: SECRETAN Altitude and azimuth adjustment by manually tilting and turning the main tube, respectively.



TRE17: SECRETAN Coarse declination by manually tilting tube; fine adjustment by linear screw.

## Newtonian Reflector Mountings - Page 2



TRE16 Altitude: Coarse Adj. 2°/ notch by lifting tube



Altitude: Fine thumb screw



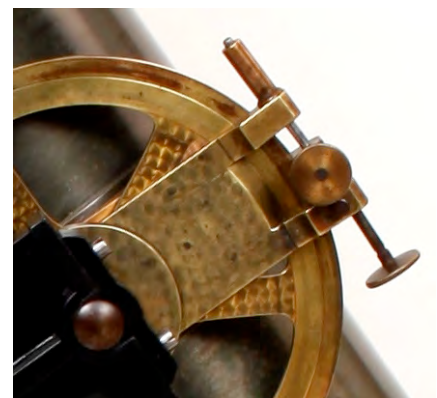
FRE1 Altitude: Manually tilt tube



Azimuth: Manually turn transit-type mount



TRE17 Right Ascension: Manual fine crank adjustment



Declination: Fine Thumb screw adjustment



## Comparison photos of thirteen (13) telescopes given new life and literally something upon which to stand

**It is a very good feeling to have raised thirteen (13) important telescopes from the ground ("dead" and nonfunctional) and place them back into operational mode. This was accomplished by finding, constructing and adapting same-period tripods for these scopes shown below. This is a strong statement for restoration period adaptations, which provide functionality, accessibility, increased value, and desired presentation versus bending over and brushing dust off of them as they lay on the floor in a closet. I am pleased to provide photos on the next two pages showing these thirteen (13) historical instruments and their return to full operational mode.**

FRA9 Lerebours et Secretan	Found and adapted a replacement tripod; designed and fabricated custom trough mount using Secretan hardware
FRA13 Brasher	Found contemporary tripod and fabricated a custom mount
FRA14 Alvan Clark and Sons	Fabricated mating plate with a hold down bolt; mounted 1867 telescope on 1867 tripod using a Lundin #5 mount
FRA19 Secretan	Found and adapted same period French tripod (Secretan/Bardou?) for this 16 lb. spyglass
FRA21 Unsigned (Secretan?)	Found and adapted a same period Bardou tripod
FRA25 Dollond	Found and adapted Dollond tripod; built new mount
FRA26 Nairne	Found reference tripod for re-creating a custom cross-strut tapered tripod of vintage Nairne design.
FRA29 Dollond	Designed and fabricated a custom 12-ft pole and sling mount
TRA13 Dollond	Found and adapted a same period Dollond desktop tripod
TRA18 Merz	Found and adapted a same period unsigned desktop tripod
FRE1 Secretan	Found and adapted a surveyor tripod; an unlikely candidate, but a near perfect match to original tripod
HRA8 Dollond	Found a period tripod for this large handheld refracting telescope
FBRA2 Ross	Found period tripod and adapted; fabricated custom mount

As you view these beautiful and functional telescopes, please remember that prior to becoming part of this collection there were lying on a floor or perhaps standing in a corner of someone's closet. So enjoy these "out of the closet telescopes" now made ready for viewing and for being viewed.

*Gallery 1*



FRA9 Lerebours et Secretan



FRA13 Brashear



FRA14 Alvan Clark and Sons



FRA19 Secretan



Unsigned "Secretan" FRA21



FRA25 Dollond



FRA26 E. Nairne



FRA29 Dollond

*Gallery 2*



**TRA13 Dollond**



**TRA18 Merz und Sohn**

*Gallery 3*



**FRE1 Secretan**

*Gallery 6*



**HRA8 Dollond**

*Gallery 7*



**FBRA2 Ross**